

# FOMS

## Fiplex Operations and Maintenance System



**fiplex**

## Fiplex Operations and Maintenance System

**FOMS** is a unique operations and maintenance system (OMS) capable of managing all signal boosters and DAS in your communications network, saving you time and money in program installation, training, and software updates.

### IS IDEAL FOR YOU IF:

- You require unified access to all your Fiplex Signal Boosters and DAS in your network.
- Your company requires full control of Fiplex Signal Boosters' and DAS' data from your own premises.
- You have in-house IT resources.

**FOMS** manages all devices included in the system via simple network management protocol (SNMP). Signal boosters data is sent via Ethernet or GSM/GPRS to the FOMS server via IP within your LAN or the Internet. Users can monitor each device and make as many configuration changes as needed in the server's database. Then the devices are reconfigured via standard SNMP protocol.

### Web Graphical User Interface

The FOMS is a non-GUI software that runs on a main server without user intervention. It is able to do all the hard work automatically.

Without any need to install any Client Application, FOMS provides a web GUI interface to users via a standard Web Browser. This allows the FOMS to be used on a Desktop PC, Laptop, Tablet or Mobile Phone without any extra configuration or installation overhead.

### Key features

- **Unified access to your entire network of Fiplex Signal Boosters and DAS**

- **One-click away from all your sites**

FOMS allows remote, real-time configuration of all Fiplex devices in your communications network. No need to visit the site. Your devices are connected via the Internet to a server installed in your premises, providing users with direct access to monitor signal boosters and to modify configurations if required. Updates are immediately synchronized for all users.

- **Your own client-server**

Fiplex technicians will install FOMS on a dedicated server at your premises. The system will be adjusted and tested in order to guarantee users full access and high performance.

- **Individual user profiles**

- **SNMP protocol over Ethernet and/or GSM/GPRS**



## What's on the menu

### Dashboard

Monitor all your devices at a glance with FOMS Dashboard.

Designed to be simple and to provide a clean interface to focus on your network status. There you can notice if everything is OK, if some device is on warning status or if there's an alarm present (communication lost, low battery, low input signal, etc)

Furthermore you can click on a specific device to view its current status or to send new settings.

### Agents

Add/remove different devices to be monitored by the FOMS. Edit parameters such as the SNMP version, DNS or IP of the device, polling period. You can also enable or disable a specific device monitoring, and more.

### Data Audit

Monitor which device parameter was updated. You can check the previous and new value of a single parameter that changed in one of the device parameters retrieval process that is done periodically. This allows to inspect single changes.

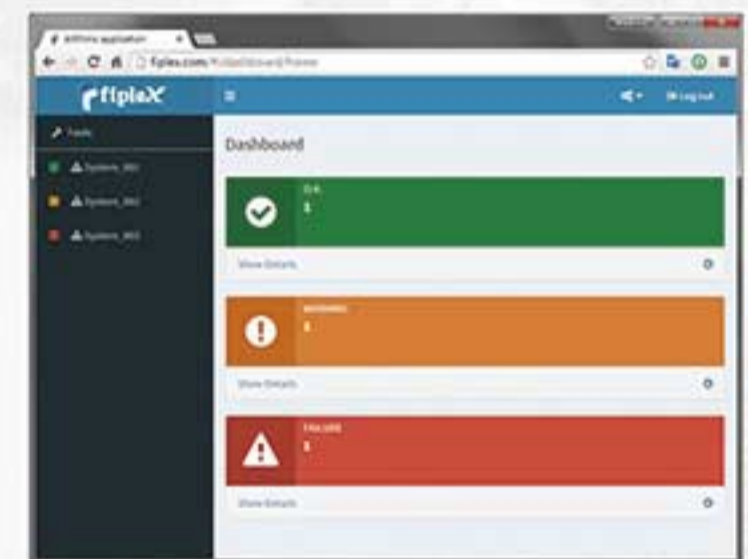
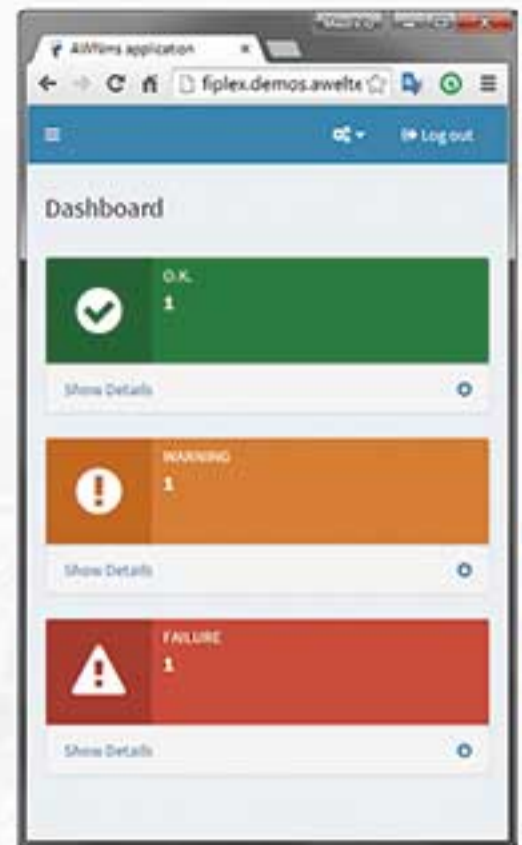
### Language

English (default), Spanish

### Settings

FOMS allows you to assign individual user profiles and it can be accessed by multiple users at the same time. Through these profiles, you can limit user permissions to:

- **View only:** User can view the signal boosters and its alarms.
- **Standard:** User can view, add and edit signal boosters information.
- **Administrator:** User has access to the back end of FOMS. The Administrator can view, add and edit signal boosters information; but also can set options and install/delete signal boosters.



## System requirements

### Minimum:

- Dedicated or semi-dedicated server
- Linux or Windows operating system
- 4 GB of RAM
- Intel i5 processor 6th generation or better
- 160 GB HardDisk space
- LAN connection (Ethernet, Fiber Optics, virtual).

### Fiplex recommends:

- A standard server hardware such a Dell R330 or superior with Intel Xeon E3-1220 v5 microprocessor
- 16 GB of RAM
- 240GB Disk Space (minimum) on Raid 1 or Raid 5
- Dual Power Source
- Gigabit Ethernet or Fiber Optics Lan connection

## On Site Connection

It is a software that allows users to access Fiplex devices on-site.

Installed in a laptop, you connect via USB directly to the device to make any adjustments.

- pFOMS: Analog Signal Boosters
- FCS: DAS and Sigital Signal Boosters

### System Requirements

Processor: Pentium IV or higher

Memory: 512 MB RAM

Disk Space: 50 MB

Operating Systems: Windows XP, Vista, 7, 8 and 10.



**Fiplex Communications, Inc.** is a designer and manufacturer of highly innovative and cost-effective electromagnetic devices and subsystems for private and public telecommunications applications, recognized worldwide.

Being an engineering driven company with +30 years of experience in the market, Fiplex supplies a wide line of passive and active products for the Telecommunications Industry, which includes standard and customized solutions for:

- Two-Way Radio and Public Safety
- Coverage extension (indoor and outdoor)
- Public Safety Central Digital DAS
- Broadcast (TV, digital TV an FM)

Through constant Research and Development, Fiplex is always striving to amplify the breadth of its product lines, while quickly responding to its clients' custom requests when needed.

Our goal is total customer satisfaction, based on a high quality product commitment.

We strive to be a leader of high tech products for private and public sectors; such as military, police and civil defense.



**Casa Central**

7331 N.W. 54th Street  
Miami, FL 33166.  
Estados Unidos  
Tel.: +1 305 884 8991  
Toll Free: 877 890 7048  
Fax: +1 305 884 4041

**Oficina EMEA**

Calle Medes, 4-6, Local.  
08023 Barcelona.  
España  
Tel.: +34 93 551 9746  
europe.sales@fiplex.com

[www.fiplex.com](http://www.fiplex.com) - [info@fiplex.com](mailto:info@fiplex.com)